



KIM SALMELA

FOR



CRYPTON®

HOME FABRIC





## Kim Salmela x Crypton

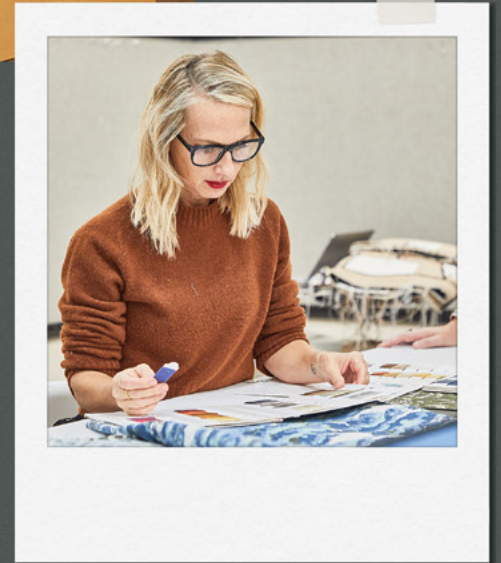
Interior designer and furniture manufacturer Kim Salmela partners with Crypton® Home Fabrics to launch her inaugural textiles collection. These woven upholstery fabrics debuted on Kim's furniture at Norwalk Furniture during Spring High Point Market 2024. The performance fabrics are a mix of relaxed, organic, and modern designs, inspired by the textured imperfections of vintage rugs and textiles she has found on her travels.

"I have been using Crypton for years at my factory in LA and for high-end boutique hotel projects, residential clients, and my own home because the fabrics are gorgeous and also are so easy to clean," explains Kim about the collaboration. "I loved getting to collaborate with the design team at Crypton's mill in North Carolina; it was so fun to showcase Crypton with these designs. Their skill in bringing my concepts to life was extraordinary to watch."

Kim's design philosophy is about creating furniture that lasts and is livable. This collection takes the performance aspects for which Crypton is known and pushes the envelope with the dynamic jacquard designs. When creating the patterns, Kim designed them specifically for furniture, including the profiles she showcased at Norwalk Furniture.











PATTERN

## Bergamo

Named after the walled town near Milan where Kim studied during college, Bergamo is a modern floral pattern that nods to antiquity. It is inspired by vintage rugs, where with time and use, heavy pattern is worn away. The softness of this design allows pattern to subtly integrate into spaces without dominating them.

Bergamo features 43% Bleach Cleanable Polyester, 28% Recycled Cotton, 17% Polyester, 12% Recycled Polyester.

Bergamo comes in 7 colors.





PATTERN

## Doheny

This versatile body cloth features a cotton-rich, refined texture and is available in nine saturated colors. It directly corresponds to our classic stripe, Robertson.

Doheny features 49% Recycled Cotton, 21% Recycled Polyester, 29% Polyester.

Doheny comes in 9 colors.







PATTERN

# Hennepin

Hennepin, named after the avenue on which Kim opened her first curated lifestyle store in uptown Minneapolis, offers an organic geometric pattern with a soft touch. This pattern was designed by Kim by cutting up and piecing together strips of linen, and the result is a gentle nod to the aerial view of a cityscape.

Hennepin features 45% Recycled Cotton, 19% Recycled Polyester, 35% Polyester.

Hennepin comes in 6 colors.





PATTERN

## Laurel

“Bouclé is not going away.” This subdued fabric is soft, inviting, and offers a lower profile texture than most traditional bouclés. The solid rich colors and the low pile enable designers to enjoy the interest of bouclé with increased durability and a more subdued effect than most on the market.

Laurel features 100% Polyester.

Laurel comes in 13 colors.







PATTERN

## LeBlanc

LeBlanc is the perfect grounding neutral. Like its namesake—a rural town in France where Kim designed a 1,000-year-old chateau—this micro-bouclé texture and rich yet restrained colors reflect a landscape that is at once lush, warm, and subdued.

LeBlanc features 50% Recycled Cotton.

LeBlanc comes in 7 colors.







PATTERN

## Nisswa

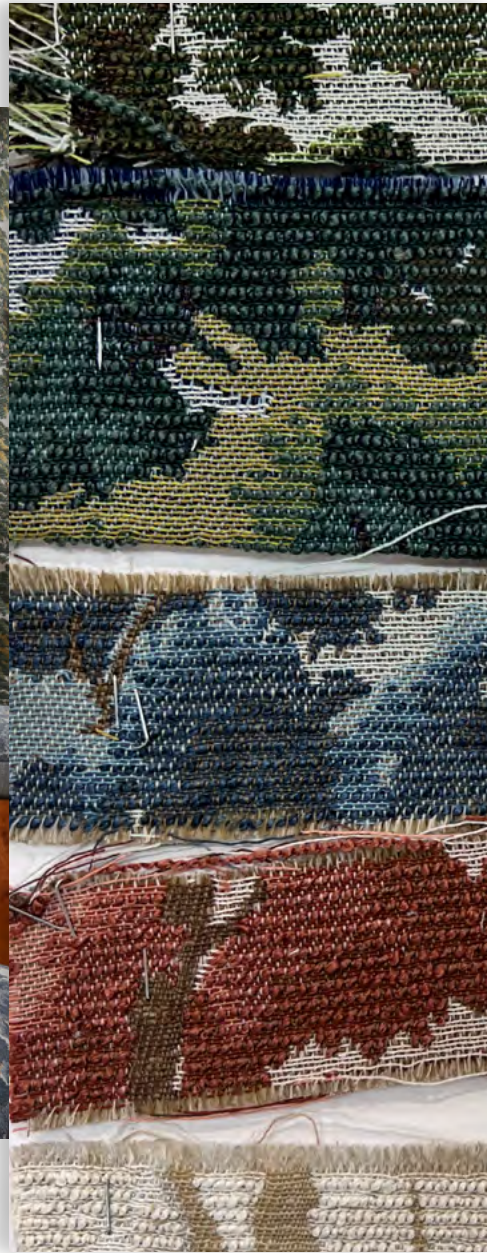
Nisswa, a town in central Minnesota where Kim spent summer weekends, has a rich history with Native American roots. Kim paid homage to the local craftspeople with this “perfectly imperfect stripe” and made sure it had lots of texture, giving it an artisanal feel.

Nisswa features 63.18% Recycled Cotton, 27.08% Recycled Polyester, 9.74% Polyester.

Nisswa comes in 7 colors.







PATTERN

# North Oaks

North Oaks was inspired by the rolling Minnesota hills where Kim spent her childhood—a place with winding roads which required a slower pace of life. This modern, heritage pattern evokes the look of rich, European tapestries that bring the wild outdoors, in.

North Oaks features 100% Polyester.

North Oaks comes in 5 colors.







PATTERN

# Robertson

This stripe, inspired by handwoven cotton rugs, comes with a weave that gives you saturated color.

Robertson features 50% Recycled Cotton, 22% Recycled Polyester, 27% Polyester.

Robertson comes in 7 colors.







PATTERN

# West Village

Add architectural energy into any space by selecting this fantastic body cloth—an oversized West Village windowpane pattern simultaneously commands attention while acting as a neutral.

West Village features 70.28% Polyester, 20.81% Recycled Cotton, 8.92% Recycled Polyester.

West Village comes in 9 colors.





KIM SALMELA

FOR

 CRYPTON<sup>®</sup>  
HOME FABRIC

